



Safe

Versatile

Easy to use

Economical



Very popular machine for medium speed automatic collating and packing of cosmetic, pharmaceutical, grocery and chemical products. The machine can also be used for wrapping of per-collated product on a tray.

Fully automatic universal system with integral horizontal collator



The Autopack Package :Faster - Smaller - Better Pack - Less Energy

Standard Features

- Integrated Controls and user-friendly HMI
- Stainless Steel finish
- Less floor area and less energy
- Line control and communication
- Better shrink through more efficient air circulation
- 5 minute size change, using quick release handles and one clip in change part.
- Lower tunnel temperature, important for cosmetic, pharmaceutical & chemical

Optional Features

- High Product stabiliser
- Printed film registration device
- Curved infeed
- Special option for aerosol packing



Autopack designers pay particular attention to specifying materials and finishes that are durable, do not affect the packaged product and remain serviceable for a long time.

Explore shrink wrapping and our range of machines at

www.autopack.com



Fully Automatic Universal System with Integral Horizontal Collator

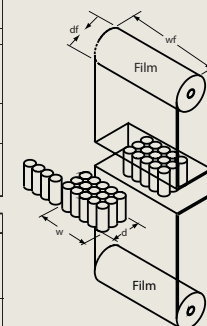
Operation

- After filling, capping and labelling, product containers are then transported into the Autopack wrapping unit, by means of a side mounted conveyor.
- Here, a pneumatic pusher collates the containers into a preselected pack formation, which upon completion is transferred forward into the welding position.
- At this stage the pack is clamped, the welding bar descends to complete the wrap, and the pusher returns to prepare the next collation of product.

- As the welding bar ascends the pusher advances to transfer the new collation into the welding position, at the same time displacing the previously wrapped collation onto continuously moving shrink tunnel conveyor.
- The wrapped collation soon enters the shrink tunnel chamber where recirculated hot air causes the wrap to shrink, and tightly conform to the contours of the contents.
- Once the pack is out of the hot chamber, forced air cooling is used to tighten the sleeve wrap to achieve a strong, secure pack ready for stacking on a pallet or placing in a shipping carton.

Specifications		45SLHL20	45SLHM25	45SLHM35	60SLHM25	60SLHM35	80SLHH25	80SLHH35
Film	Max roll width	wf	430	430	430	580	580	780
	Max thickness (µm)	tf	80	100	100	120	120	120
	Max roll dia	df	300	300	300	300	300	300
Pack Size	max pack width ¹⁾	wp	320	320	320	420	420	650
	Max pack depth ²⁾	dp	250	250	250	300	300	400
	Max pack height ³⁾	hp	200	250	350	250	350	250
	Diameter min-max ⁴⁾	d	35-100	35-100	35-100	35-100	35-100	35-100
Packing speed	Without collation	Packs/min	15-20	18-23	18-23	18-23	12-20	12-20
	With collation ⁵⁾	Packs/min	10-13	12-13	12-13	12-15	8-15	8-15
<i>Note! For bigger pack size need to use longer tunnel.</i>								
Electrical supply	380/415V+N+E	A/ph	16	16	18	19	21	32
	Average Power usage	kW	6	6	7	7	8	12
Compressed Air	Air pressure	kPa	500	500	500	600	600	650
	Air usage per pack	NL	11	11	11	14	15	23
	Cubic Feet / Min	cfm	6	6	6	7	8	9

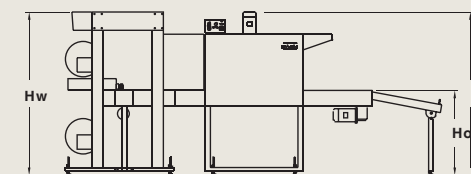
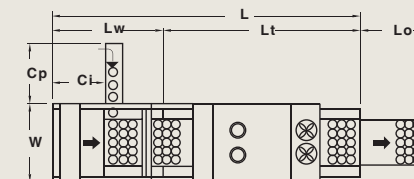
Note: All Specifications and Dimensions are same for SLU



Dimensions		45SLHL20	45SLHM25	45SLHM35	60SLHM25	60SLHM35	80SLHH25	80SLHH35
Total system	Overall Length ⁶⁾	L	2505	3005	3005	3005	3905	3905
	Width	W	650	650	650	800	1000	1000
	Infeed Height + 70	Hi	830	830	830	830	830	830
	Outfeed height + 70	Ho	830	830	830	830	830	830
Wrapper	Length ⁷⁾	Lw	1005	1005	1005	1005	1105	1105
	Height	Hw	1690	1690	1690	1690	1690	1690
Shrink Tunnel	Length	Lt	1500	2000	2000	2000	2800	2800
	Height	Ht	1600	1620	1720	1620	1720	1750
Infeed Conveyor	Projection	Co	600	800	800	775	775	1075
	Indent	Cl	630	630	630	560	560	525
Outfeed Roller	Length	Lo	750	750	750	1500	1500	1500
	Width	Lw	350	350	350	500	500	700

The above parameters are constantly reviewed and updated and may vary from project to project depending on customers requirements.

- 1) Maximum stated pack width can only be achieved if the pack depth and the height are not at their maximum. In general as the pack depth or height goes up, then for a given film size, width of the pack must decrease. If in doubt, contact your local Autopack representative or the distributor.
- 2) The values specified are to satisfy most applications but if they don't accommodate your product size please contact us as we may be able to vary some machine parameters during the manufacturing process.
- 3) The parameter "d" refers to the range of adjustment for collating of cylindrical shape products. Rectangular shape products can be collated without table guiding, hence the value of "d" may be easily increased, but not exceeding "dp"
- 4) The final speed is very much dependent on the method of collating, shape size and nature of the product as well as the size of collation, 150 units/min would be a typical speed for a 330ml cylindrical container with a base dia, of say 50, collated into a 12 pack.
- 5) Depending on customers product range, different transfer tables maybe used between wrapper and tunnel. This will alter values of L and Lw.



Manufactured by: **AUTOPACK CO., LTD.**

98/50-51 Moo11, Phutthamonthon Sai 5 Rd,
Raikhing, Sampran,
Nakornpathom, 73210, Thailand
Tel: (66) 2 001-8940, Fax: (66) 2 001-8941

Distributed by: